

## ŠKODA AUTO, Kvasiny plant

### Maintenance for paint shop and assembly

[siemens.de/industry](http://siemens.de/industry)

#### Customer

ŠKODA AUTO a.s.

#### Location

Kvasiny plant, Czech Republic

#### Implementation period

Since August 2001

#### Scope of delivery and performance

Maintenance and repair for the entire paint shop and parts of the final assembly, such as conveyor systems as well as control technology and auxiliary equipment (power supply, compressed air, cooling station).

Spare parts management  
Use of a CMMS system by means of Maintegrity / COMOS

#### The challenge

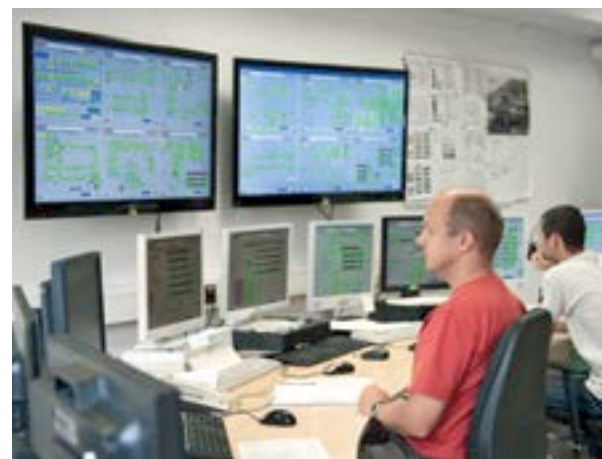
The ŠKODA AUTO branch operation in eastern Bohemia can look back on a long tradition of automobile manufacture. For the production of the Superb, Yeti and Roomster, a completely new manufacturing facility with state-of-the-art technology was set up in Kvasiny.

The production concept is of modular design and meets the latest quality and cost-efficiency requirements in every respect. The high quality of the processes is assured by implementing preventive maintenance measures among other means.

ŠKODA AUTO chose Siemens as its partner for the maintenance activities at the paint shop which handles up to 820 car bodies daily in a maximum of 18 colors.



Paint shop



Technical control room



Paint shop – production line



Assembly

## The solution

The objective is to ensure high plant availability and to improve the transparency of maintenance costs.

In the painting section and parts of assembly, more than 60 maintenance employees look after all equipment round the clock in 4-shift operation. The maintenance activities cover the segments comprising production equipment, building technology as well as certain ancillary equipment like compressors, cooling station or the CO<sub>2</sub> fire extinguishing system.

The maintenance activities are not restricted solely to the rectification of faults that occur and ensuring that production process runs properly. The planning and implementation of preventive maintenance measures and the provision of all spare parts required also help achieve high plant availability.

Downtimes can also be reduced to a minimum with the support of a CMMS system (Computerized Maintenance Management System).

## The benefits

- Increased plant availability (> 98 %)
- Reduction in costs thanks to standard maintenance concept
- Improved plant cost transparency

© 2014 Siemens. All rights reserved.

The information in this brochure contains general descriptions of the technical options and features available and may not always apply in individual cases or may be changed as a result of continuing product development.

Performance features are binding only if expressly agreed upon by contract.

Siemens AG  
Industry Sector  
Customer Services Division  
Value Services  
Postfach 3240  
91052 Erlangen  
Germany

E-mail: [ipm.industry@siemens.com](mailto:ipm.industry@siemens.com)  
Article no. E10001-T430-A339-X-7600  
TH 241-140187