



Completely Integrated Solutions  
for the Water Industry

# SIWACIS PLAN ADMIN

Improved Operating Comfort  
and Efficiency with Forecast  
Data and Schedule Management

Your Success is Our Goal

# SIEMENS

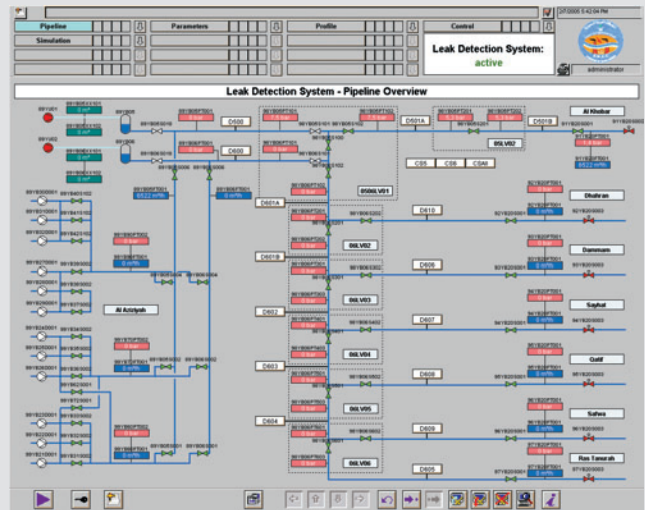
Industrial Solutions and Services

SIWACIS PLAN ADMIN, part of the SIWACIS product family, supports the plant operator on the one hand with the preparation of forecasts for the expected water consumption and, on the other hand, allows for an evaluation and processing of the calculated results from different angles. SIWACIS PLAN ADMIN preprocesses the default data for consumption or electric rates specified by means of the SIWACIS PLAN OPTIM module on a day-spanning basis and subsequently processes the acquired operating data.

## The challenge

The more accurately a water supplier is able to predict consumption, the better can plants be adjusted to the respective rates.

If consumption changes unexpectedly, water plants are often only able to provide for a safe supply under unfavorable economic conditions. To prepare forecasts with maximum accurateness and to embed experience, which has been gained over many years, water suppliers increasingly use modern technology and tools to ensure an economical operation.



## Five good reasons for SIWACIS PLAN ADMIN

- Support of the operating personnel by automated forecasts
- Reduction of the fault rate during the entry of operational framework conditions
- Creation of accurately coordinated, station-spanning schedule tables
- Schedule archiving to store operator know-how
- Easy and modular extension option with further SIWACIS PLAN products

**SIWACIS**  
Completely Integrated Solutions  
for the Water Industry

Industrial Sector Services	Industrial Sector Applications	IT-Applications	Energy, Drives, Automation
----------------------------	--------------------------------	-----------------	----------------------------

Water Quality	Supply and Transportation	Mechanical Treatment	Biological Waste Treatment	Chemical/Physical Treatment	Filtration	Disinfection	Treatment of Sewage Waste
---------------	---------------------------	----------------------	----------------------------	-----------------------------	------------	--------------	---------------------------

## Our solution

SIWA<sup>CIS</sup> PLAN ADMIN is an add-on which has been perfectly matched to SIWA<sup>CIS</sup> PLAN OPTIM and which provides even more operating comfort by extending the OPTIM module by forecast and schedule functions.

SIWA<sup>CIS</sup> PLAN ADMIN uses Microsoft Excel to integrate the day-class depending consumption patterns of the individual plant components into a forecast data administration. This way, it is possible to comfortably generate new forecast patterns for every individual consumer. Already available patterns of the respective consumer need only be copied, adjusted and stored under a different name.

### Immediate overview of all parameters

The calendar integrated in SIWA<sup>CIS</sup> PLAN ADMIN offers the possibility for a future-oriented planning in the long run: An individual consumption pattern can be defined for every consumer and every day. The forecast patterns, however, can still be individually modified independently of the day planning.

While SIWA<sup>CIS</sup> PLAN OPTIM displays the calculated pump schedules station by station, the add-on SIWA<sup>CIS</sup> PLAN ADMIN pools all stations in one overall schedule for a better overview. All switching operations are chronologically listed for the operating personnel in the form of a table.

### The following default values can be set in SIWA<sup>CIS</sup> PLAN (examples):

- Water demand of the individual consumers
- Minimum and maximum filling level of tanks
- Production for water suppliers
- Price for power suppliers

### The following results are displayed:

- Pump and turbine runtimes
- Filling levels of tanks
- Production for water suppliers
- Costs for power and water suppliers

## SIWA<sup>CIS</sup> PLAN – the modular water management system

SIWA<sup>CIS</sup> PLAN is a water management system with modules for the optimization and simulation of drinking and waste water plants. Thanks to its modular design, SIWA<sup>CIS</sup> PLAN offers individual solutions for drinking and waste water plants.

For example: SIWA<sup>CIS</sup> PLAN OPTIM calculates the optimum operating plan for all pumps and tanks of a supply system and is perfectly integrated in the SIWA<sup>CIS</sup> PLAN modular water management system.

It supports operators of water supply systems in sustainably reducing the operating costs of their plants and increasing operational reliability. At the same time, the plant's availability and supply reliability can be considerably increased by helping to plan an efficient maintenance program.

Particularly convenient: Thanks to its modular structure, SIWA<sup>CIS</sup> PLAN offers the unique possibility of realizing the most varying combinations of comprehensive total solution approaches completely independent of the control and automation technology in use. The system can thus conveniently be adapted to the specific requirements of the respective plant operator at any time.

It is this in particular which makes SIWA<sup>CIS</sup> PLAN especially efficient and broadly applicable. As existing technologies are integrated into the overall solutions, SIWA<sup>CIS</sup> PLAN is a profitable investment which safeguards the value of installed technology. With its industry-specific modules, for example for operating personnel training or circuit diagram optimization for schedule administration, SIWA<sup>CIS</sup> PLAN perfectly covers all important areas of the water industry.

[www.siemens.com/water](http://www.siemens.com/water)

## SIWA<sup>CIS</sup> – Completely Integrated Solutions for the Water Industry

As a comprehensive industry-specific solution for the water industry, our SIWA<sup>CIS</sup> product family integrates all the products and services you need for sustained maximization of your plant's performance.

For each particular task, a solution has been defined that

- **horizontally** improves all production processes – from the preparation of drinking water to environment-friendly wastewater disposal
- **vertically** integrates the company's information flows end-to-end, helping corporate management to make better-founded decisions
- and **chronologically** lowers operating costs and provides lasting security and economic efficiency – for example with the SIWA<sup>CIS</sup> PLAN water management solutions and our life cycle services.

Due to this unique combination of horizontal, vertical and life cycle dimensions, our solutions all carry the genes of an exhaustive and sustained plant productivity in their very core.

**For More Productivity. More Performance. More Power. Completely Integrated Solutions from Siemens.**

SIWA<sup>CIS</sup> is a trademark of Siemens AG  
CIS = Completely Integrated Solutions

The information provided in this brochure contains merely general descriptions or characteristics of performance which in case of actual use do not always apply as described or which may change as a result of further development of the products.  
An obligation to provide the respective characteristics shall only exist if expressly agreed in the terms of contract.

Siemens AG

Industrial Solutions and Services  
Water Technologies (I&S IP WAT)  
Schuhstrasse 60  
91052 Erlangen, Germany

E-mail: [water@siemens.com](mailto:water@siemens.com)

Order No.: E10001-P18-A10-V2-7600  
Printed in Germany  
Dispo No.: 21617 K No.: 37800  
11C6075 C-IPWAT520M04 PA 04052.  
Subject to changes

© Siemens AG 2005 All Rights Reserved