



Completely Integrated Solutions  
for the Water Industry

## SIWA<sup>CIS</sup> PAS eWD

No limits for system documentation  
in Web-based standard formats

Your Success is Our Goal

# SIEMENS

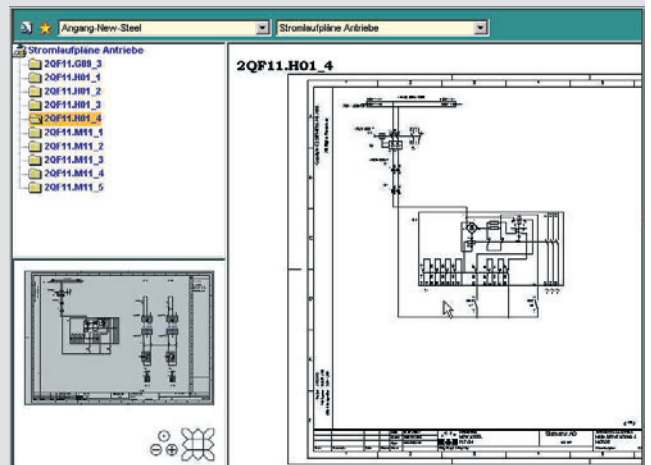
Industrial Solutions and Services

With SIWA<sup>CIS</sup> PAS eWD (electronic Web-based Documentation), you can handle all project documentation in Web-based standard formats. As a result, up-to-date documentation can be accessed anytime, from anywhere in your plant. This is particularly valuable in the event of malfunctions or during maintenance work, which is when it's most important to be able to access relevant information fast and reliably and take appropriate action.

### The challenge

Paper-based project documentation has long failed to meet industry requirements. With paper documents, gathering information from various sources and accessing it later is very laborious and time-consuming. Another disadvantage is that paper tends to confine information within local boundaries. A first step toward a solution is conversion to electronic documentation that's based on original records kept in common software formats, such as Word, Excel and AutoCAD. This requires, however, that the appropriate software tools (such as MS Office) are installed on every computer throughout the plant.

SIWA<sup>CIS</sup> PAS eWD offers an elegant, comprehensive solution. MS Office documents as well as CAD hardware drawings (from Siggraph, AutoCAD, Elcad or Eplan), software charts from PCS 7, even subcontractor documents in the Acrobat Reader format – all project documentation is converted by a single generator into standard Web formats (HMTL, XML, SVG). As a result, all of these documents can be displayed by simply using a Web browser. The core elements of SIWA<sup>CIS</sup> PAS eWD include an integral search engine that generates search results from all of these document types, plus integration with the PCS 7 WinCC HMI system. This combination creates a link between up-to-date process information and the related documents, which is especially valuable for maintenance purposes.



Schematic diagram with overview display

### Five good reasons for SIWA<sup>CIS</sup> PAS eWD

- Plant-wide access to all documentation based on standardized Web technologies
- Relevant information is rapidly found by the integrated search engine
- Plant-wide overview through context-sensitive integration into the PCS 7 WinCC HMI system with automatic document linkage
- Fast access to centralized systems documentation in electronic form that can be readily updated.
- Flexible expansion of the documentation volume with in-house documentation, such as service instructions, or with documents of new subcontractors.

**SIWA<sup>CIS</sup>**  
Completely Integrated Solutions  
for the Water Industry

Industrial Sector Services	Industrial Sector Applications	IT-Applications	Energy, Drives, Automation
----------------------------	--------------------------------	-----------------	----------------------------

Water Quality	Supply and Transportation	Mechanical Treatment	Biological Waste Treatment	Chemical/Physical Treatment	Filtration	Disinfection	Treatment of Sewage Waste
---------------	---------------------------	----------------------	----------------------------	-----------------------------	------------	--------------	---------------------------

## Our solution

With SIWA<sup>CIS</sup> solutions, systems documentation is based on Microsoft Office files (Word, Excel), on engineering results from CAD tools, as well as on PCS 7/CFC configurations and PDF files from suppliers. SIWA<sup>CIS</sup> PAS eWD prepares all of these documents for use via Web technologies. A central documentation server supplies systems information via XML/HTML documents and image-based data via GIF/JPG/SVG documents for Web-based distribution to the clients in the customer network.

The required hard drive capacity of the server depends on the volume of the system's documentation. No special requirements exist for processor performance and main memory. It is merely necessary to install Internet Explorer plus Acrobat Reader and the SVG plug-in (both from Adobe) on the display clients to enable access via the network to the server (Web server) and its data.

### Simple operation – great results

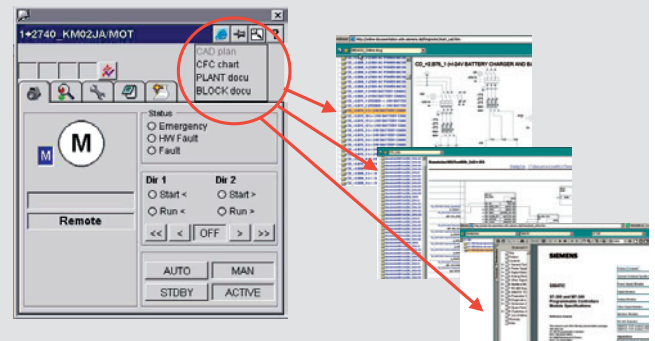
The integrated search engine in SIWA<sup>CIS</sup> PAS eWD provides rapid access to any documents containing a specific search term. For these queries, not only Office documents but any charts and drawings as well as PDF files will be searched. Search queries can be posted not only within a given project, but also across multiple sub-projects.

The automatic, bi-directional linking of hardware- and software-related documents makes it possible to navigate from a module located in the circuit drawing to its software implementation in the CFC project, or vice versa. In today's engineering environments, such capabilities are non-existent because of the separation of hardware and software engineering. But it's this very functionality that's so valuable in systems service.

SIWA<sup>CIS</sup> PAS eWD furthermore integrates all interlinked documents automatically in a contents-sensitive way with the PCS 7 WinCC visualization system.

A generator with graphic user interface is optionally available. It can be used for in-house maintenance of the generated systems documentation. It can also integrate additional subcontractors into SIWA<sup>CIS</sup> PAS eWD, and make related information accessible throughout the plant.

Additional functionalities of SIWA<sup>CIS</sup> PAS eWD include automatic preparation for printing, as well as dynamic display of current configuration information about active network components, or of previews of image files to be selected.



Automatically generated drop down menu enables context-sensitive navigation to detailed information

## SIWA<sup>CIS</sup> – Completely Integrated Solutions for the Water Industry

As a comprehensive industry-specific solution for the water industry, our SIWA<sup>CIS</sup> product family integrates all the products and services you need for sustained maximization of your plant's performance.

For each particular task, a solution has been defined that

- **horizontally** improves all production processes – from the preparation of drinking water to environment-friendly wastewater disposal
- **vertically** integrates the company's information flows end-to-end, helping corporate management to make better-founded decisions
- and **chronologically** lowers operating costs and provides lasting security and economic efficiency – for example with the SIWA<sup>CIS</sup> PLAN water management solutions and our life cycle services.

Due to this unique combination of horizontal, vertical and life cycle dimensions, our solutions all carry the genes of an exhaustive and sustained plant productivity in their very core.

**For More Productivity. More Performance. More Power.**  
Completely Integrated Solutions from Siemens.

[www.siemens.com/water](http://www.siemens.com/water)

SIWA<sup>CIS</sup> is a trademark of Siemens AG  
CIS = Completely Integrated Solutions

The information provided in this brochure contains merely general descriptions or characteristics of performance which in case of actual use do not always apply as described or which may change as a result of further development of the products. An obligation to provide the respective characteristics shall only exist if expressly agreed in the terms of contract.

Siemens AG

Industrial Solutions and Services  
Water Technologies (I&S IP WAT)  
Schuhstrasse 60  
91052 Erlangen, Germany

E-mail: [water@siemens.com](mailto:water@siemens.com)

Order No.: E10001-P18-A26-V1-7600  
Printed in Germany  
Dispo No.: 21617 K No.: 37800  
11C6076 C-IPWAT520M06 PA 04052.  
Subject to changes

© Siemens AG 2005 All Rights Reserved