

Completely Integrated Solutions
for the Pulp and Paper Industry

SIPAPER^{CS} DCS

End-to-end automation reduces
costs

Your Success is Our Goal

SIEMENS

Industrial Solutions and Services

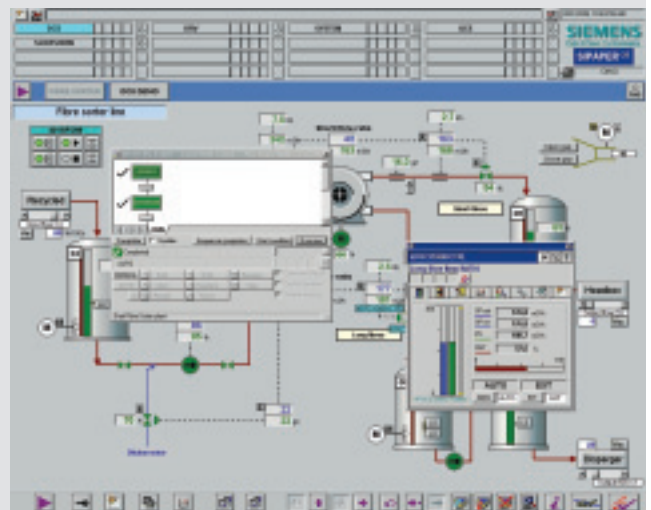
Integrated automation for successful globalization

The global trend of company mergers, pressure on costs and the resulting need for international standardization in the pulp and paper industry call for new approaches to automation.

SIPAPER^{CS} DCS (Decentralized Control System) is an integral part of our SIPAPER^{CS} product family. Whether for drive technology or higher-level control systems, hardware based on SIMATIC[®] and a software solution based on pulp and paper standards form a hierarchical, seamless solution covering the entire process chain, from the wood yard to shipping and through all levels of control and instrumentation technology.

Holistic solutions vs. costly system heterogeneity

A variety of different, isolated automation systems are still often to be found in pulp and paper plants. This gives rise to problems with interfaces, a greater training expense, varying operating philosophies and greater logistics effort for maintenance. The short and often asynchronous innovation cycles of the individual systems often prove costly and time-consuming during migration and this distracts effort from the company's actual core business. There is only one answer to the problem of follow-up investment in individual systems – phase out isolated solutions in favor of end-to-end automation.



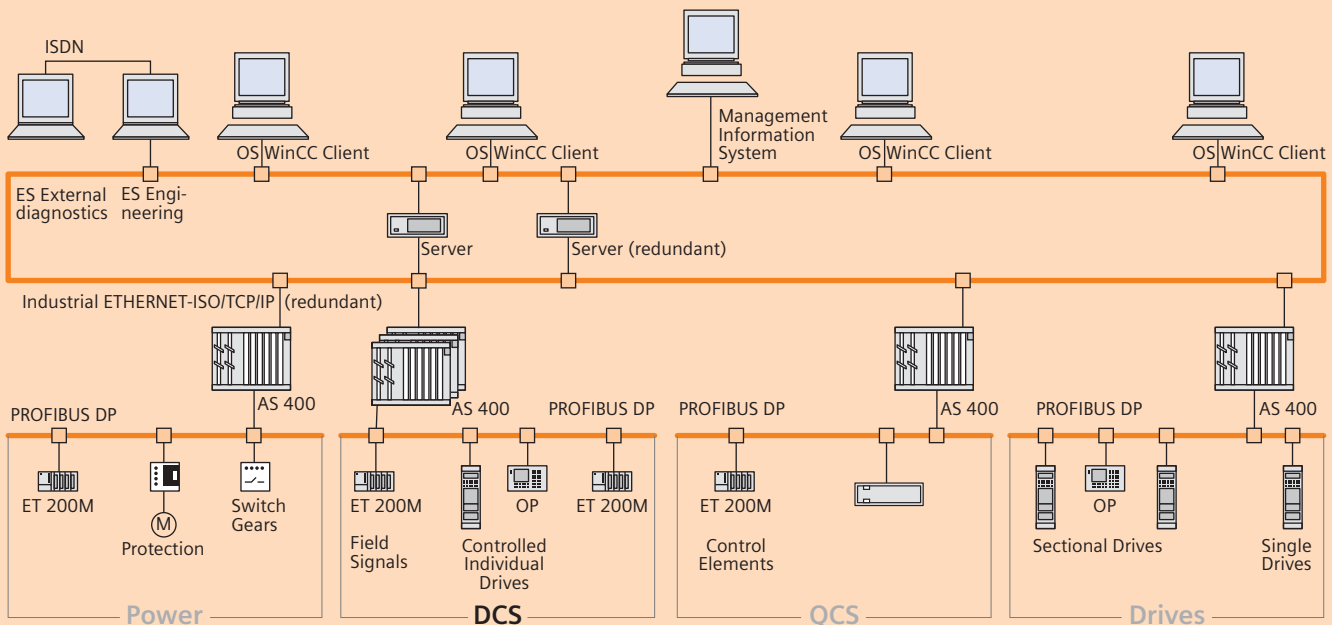
The benefits of SIPAPER^{CS} DCS at a glance

- customizable solutions based on the international innovative standards of SIMATIC PCS 7, the world market leader for automation technology
- is consistently available throughout the world, with guaranteed international support throughout the entire life cycle
- future-safe investment which provides reliable information for better-founded decisions from the field to the management level
- use of uniform components for drives, automation and quality control technology that are operated via decision-friendly interfaces saves time and money
- simple scalability as an integral part of the SIPAPER^{CS} product family, e.g. to react to market changes

SIPAPER^{CS}

Completely Integrated Solutions
for the Pulp and Paper Industry





SIPAPER^{CS} DCS – Our solution in detail

The end-to-end automation solution SIPAPER^{CS} DCS incorporates the advantages of the world market leader, SIMATIC. This means that pre-fabricated, integrated software modules developed jointly with our customers allow uniform automation throughout the mill. Taking advantage of this powerful automation platform and the worldwide application of our pulp and paper standard modules means your investment is a solid one, backed up by highly-effective global support.

Forward planning brings huge gains

The use of the same components and future-oriented solutions for drive, automation and quality control results in sustained consistency in SIPAPER^{CS} DCS.

The scalability of our DCS solutions allows time and cost-saving partial innovation – as and when technical progress or functional expansion make this necessary. As such, the system can grow and change to your requirements while at the same time providing you with a consistent, flexible solution from the field to the ERP level.

Helping you make better decisions

The company-wide consistent integration of our solutions offers an exceptional degree of data transparency and wide diagnostic possibilities – the basis for process optimization and reduced downtimes. The high degree of plant automation is largely thanks to the power of the process control software. It provides a decision-friendly overview of every step and all transitional stages, with advice and dynamically generated forwarding to make status information simple to track.

Uniformity right through to operation

Our standards for operation and process supervision have been developed in conjunction with our customers and are thus adapted perfectly to the needs of the pulp and paper industry. Each process object has a combined view for "Operation" and "Maintenance" to ensure that fast reactions are possible. The plant operator – first in the chain – can tell whether a fault signal has been triggered by a process or an electrical problem.

www.siemens.com/paper

*SIPAPER^{CS} is a trademark of Siemens AG.
CIS = Completely Integrated Solutions*

The information provided in this brochure contains merely general descriptions or characteristics of performance which in case of actual use do not always apply as described or which may change as a result of further development of the products. An obligation to provide the respective characteristics shall only exist if expressly agreed in the terms of contract.

Siemens AG
Industrial Solutions and Services
Pulp and Paper Technologies
Schuhstr. 60
91052 Erlangen, Germany
E-mail: paper@siemens.com

Bestell-Nr.: E10001-P15-A4-V3-7600
Printed in Germany
Dispo-Nr.: 21619 K-Nr.: 33700
11C6163-C-IPPP5206 M02 PA 10051.5
Subject to change without prior notice

©Siemens AG 2004. All Rights Reserved

SIPAPER^{CS} – Completely Integrated Solutions for the Pulp and Paper Industry

As a comprehensive industry-specific solution for the pulp and paper industry, our SIPAPER^{CS} product family integrates all the products and services you need for sustained maximization of your plant's performance.

For each particular task, a solution has been defined that

- **horizontally** improves all processes – from pulp to finished paper
- **vertically** integrates the company's information flows end-to-end, helping corporate management to make better-founded decisions
- and **chronologically** enables optimized maintenance and comes with assured further development over the whole life cycle of your plant.

Due to this unique combination of horizontal, vertical and life cycle dimensions, our solutions all carry the genes of an exhaustive and sustained plant productivity in their very core.

**For More Productivity. More Performance. More Power.
Completely Integrated Solutions from Siemens.**