

Completely Integrated Solutions
for the Pulp and Paper Industry

SIPAPER^{CIS} QCS

Improved Customer Satisfaction with
End-to-End Quality Control

Your Success is Our Goal

SIEMENS

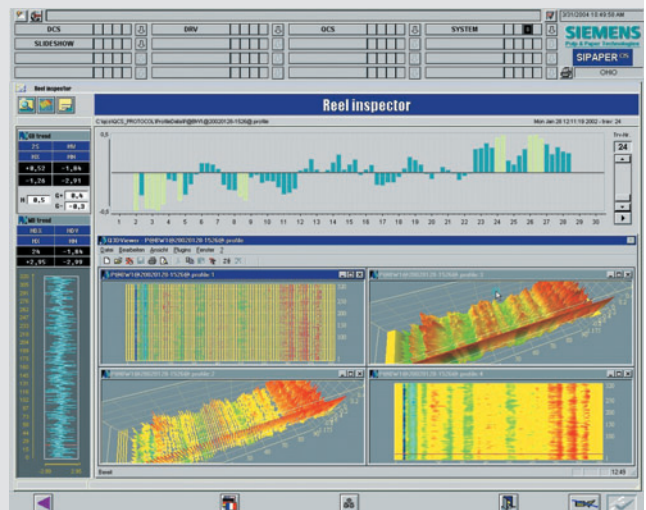
Industrial Solutions and Services

Quality control throughout all processes

Constantly high quality standards are nowadays an absolute must on the market. To maintain these standards, Siemens offers a consistent quality control chain with SIPAPER^{CIS} QCS (Quality Control System), which is integrated into the entire process via the SIPAPER^{CIS} DCS (Decentralized Control System). This concerns measuring, MD and CD control, control elements as well as data archiving. Thanks to this system, all important data required for quality control are available throughout the factory, process modifications can be rapidly realized and the respective documentation is surely generated.

Constant quality as a result of constant quality control

Companies who want to satisfy their customers in the long term must ensure a constantly high product quality. This particularly applies to the pulp and paper industry. Within this context, it is not sufficient to scan and evaluate single quality parameters. The acquired information must be continuously recorded to derive efficient control strategies. In other words: An integrated quality control chain is needed which ensures online recognition and controllability of the required quality.



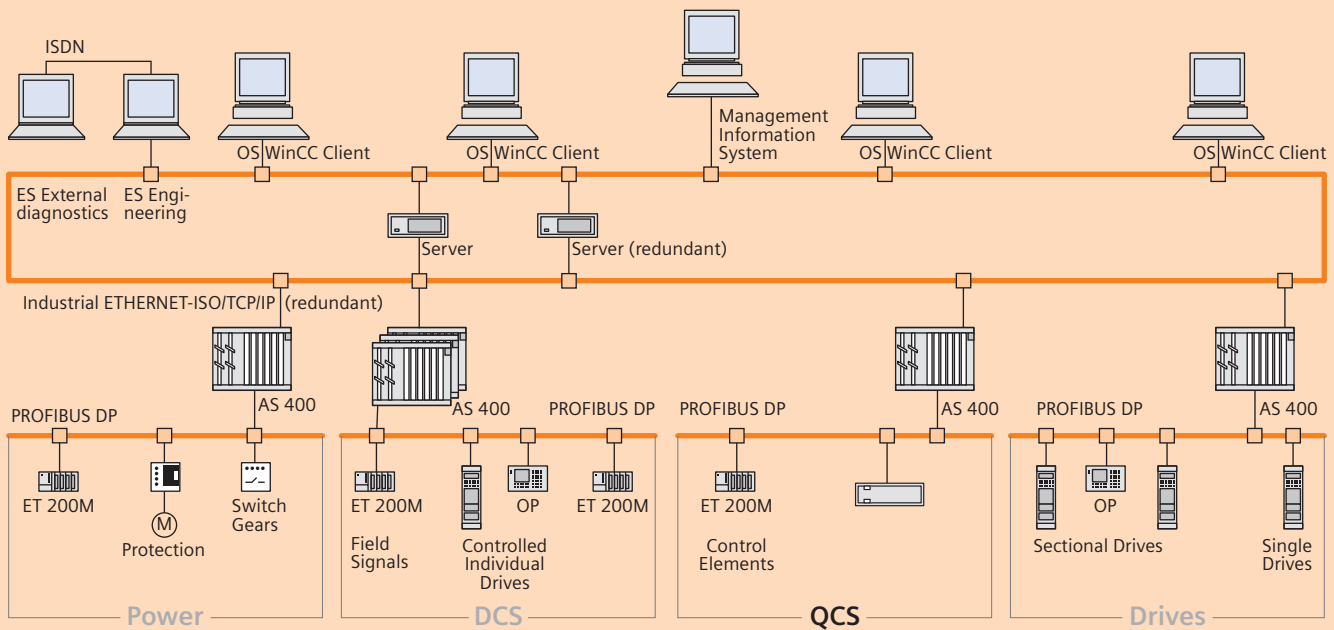
The benefits of SIPAPER^{CIS} QCS at a glance

- Integration into the end-to-end automation solution, SIPAPER^{CIS} DCS, based on the market leader SIMATIC PCS 7
- Fast reactivity in case of quality deviations and easy grade change
- Reproducible quality parameters thanks to traceability with access to historical quality data (with graphic display)
- Documentation by means of a comprehensive and individually configurable reporting system
- As an integral component of the SIPAPER^{CIS} product family, the system facilitates a systematic quality management

SIPAPER^{CIS}

Completely Integrated Solutions
for the Pulp and Paper Industry





SIPAPER^{CIS} QCS – Our solution in detail

Being an integral part of the SIPAPER^{CIS} product family means our quality control systems are seamlessly integrated into the system topology of production and as such actively help make sure the required paper quality is attained. This rational connection of measured data, their evaluation, as well as corresponding control algorithms and strategies are a major step into the future of quality management.

Important information always at hand

The SIPAPER^{CIS} QCS quality control system stands for maximum efficiency of modern, tried-and-tested components in connection with highly-available measuring racks and sensors connected by PROFIBUS. The acquired information is processed by SIPAPER^{CIS} QCS and subsequently affects the process by the actuation of corresponding control elements. Using modern data recording, processing and evaluation methods, the system then rapidly and reliably supplies information that helps minimize non-conformance production.

Integration with SIPAPER^{CIS} automation

Our answer to the increasing demands on effective process control is the seamless integration of our quality management solution into the entire automation topology – all within the framework of our SIPAPER^{CIS} product family. The SIMATIC S7 platform on which this automation is built upon, is accurately matched to the industry-specific requirements on measurement and control. Tried-and-tested packages comprising standardized control modules for pressure, flow rate, consistency, temperature, filling level, etc. are available for many applications. On the basis of such packages, effective solutions for optimized CD and MC controls and product strategies are provided, which is particularly important in ensuring fast batch changes and minimized outage times.

www.siemens.com/paper

SIPAPER^{CIS} – Completely Integrated Solutions for the Pulp and Paper Industry

As a comprehensive industry-specific solution for the pulp and paper industry, our SIPAPER^{CIS} product family integrates all the products and services you need for sustained maximization of your plant's performance.

For each particular task, a solution has been defined that

- **horizontally** improves all processes – from pulp to finished paper
- **vertically** integrates the company's information flows end-to-end, helping corporate management to make better-founded decisions
- and **chronologically** enables optimized maintenance and comes with assured further development over the whole life cycle of your plant.

Due to this unique combination of horizontal, vertical and life cycle dimensions, our solutions all carry the genes of an exhaustive and sustained plant productivity in their very core.

**For More Productivity. More Performance. More Power.
Completely Integrated Solutions from Siemens.**

SIPAPER^{CIS} is a trademark of Siemens AG.
CIS = Completely Integrated Solutions

The information provided in this brochure contains merely general descriptions or characteristics of performance which in case of actual use do not always apply as described or which may change as a result of further development of the products. An obligation to provide the respective characteristics shall only exist if expressly agreed in the terms of contract.

Siemens AG
Industrial Solutions and Services
Pulp and Paper Technologies
Schuhstr. 60
91052 Erlangen, Germany
E-mail: paper@siemens.com

Bestell-Nr.: E10001-P15-A6-V3-7600
Printed in Germany
Dispo-Nr.: 21619 K-Nr.: 33700
11D6174 C-IPPP5206M05 PA 11051.5
Subject to change without prior notice

©Siemens AG 2005. All Rights Reserved