

Completely Integrated Solutions
for the Mining Industry

SIMINE^{CIS} PIMS

Effective visualization, analysis and
documentation of process-related data

Your Success is Our Goal

SIEMENS

Industrial Solutions and Services

Siemens offers an effective solution for the visualization, analysis and documentation of production data in the form of SIMINE^{CIS} PIMS, covering the entire process chain, from extraction to distribution. The system's structure makes it particularly suitable for complex process chains involving several systems. Thus, SIMINE^{CIS} PIMS supports management not only with the daily analysis of production data, but also with the permanent consolidation and enhancement of business performance.

The challenge

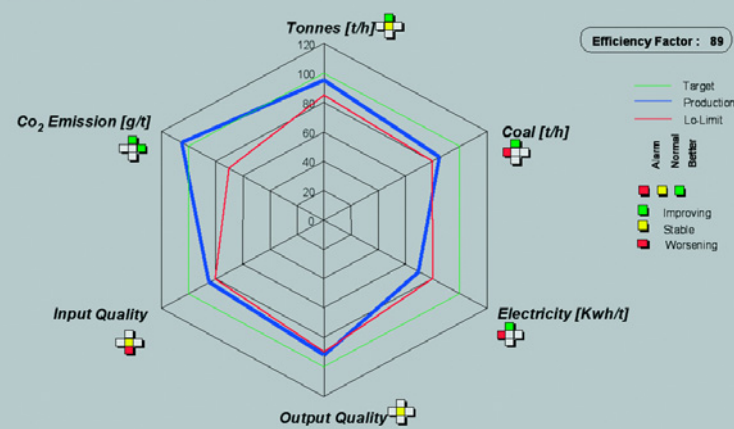
From conveying, through storage and transport, to mixing and refining, the various parts of the process chain in the mining industry are subject to individual optimization criteria, depending on whether the focus is on extraction, the end-customer's requirements or the static quality of the material transported. In addition, higher quality requirements, ever more stringent environmental regulations and the challenges of globalization increase the pressure on the industry as a whole.

Thus, only those who are familiar with all the current status levels of their resources, including detailed product parameters, can coordinate the overall process chain, thereby permanently enhancing the efficiency and quality of their processes. Only those who have access to a modular solution with standardized interfaces safeguard flexibility, enabling adaptation to continuously changing requirements, and the security of their investments.

Our solution

SIMINE^{CIS} PIMS is a solution that actively meets the challenges of the mining industry head on. As a Process Information Management System, it not only optimizes the flow of information within a company, but also the use of all production resources. The central real-time database ensures the comprehensive visualization and analysis of all processes and data – and enables a seamless connection to the ERP level.

Kiln No. 1 Total Efficiency



KPI graphical interface in the intranet

Five good reasons for SIMINE^{CIS} PIMS

- Easy selection and preparation of all decision-related information – for example in the form of KPIs with user-defined detailed analyses and reports
- Secure and speedy decision-making – thanks to transparent information along the entire process chain
- More security – thanks to optimum options for monitoring critical process parameters
- Increased performance – thanks to real online information for intelligent service concepts
- Greater security of investment – thanks to high levels of flexibility for expansion and easy integration of alien systems and applications

Information on the whole process chain available in real time

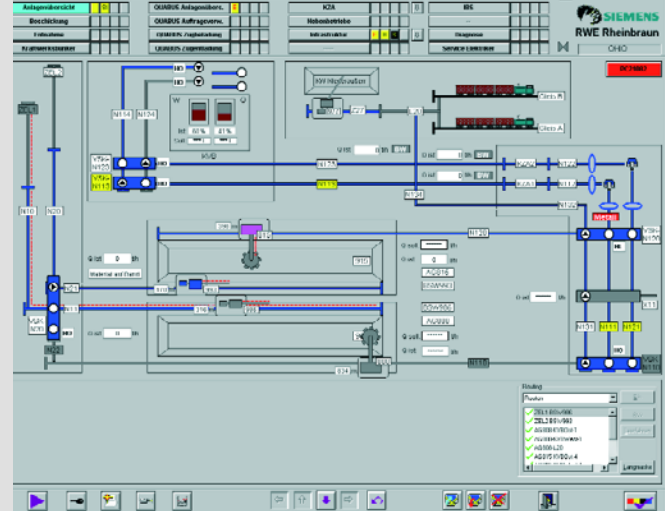
SIMINE^{CIS} PIMS gathers and saves all data from the production machinery and auxiliary systems and uses this as the basis for producing a precise picture of the whole process chain. Even data from alien systems can be read out by means of couplings and saved in the central data pool. This ensures that visualization is always up-to-date and available at any location by means of the Internet.

Decision-related information – for all users

All users – whether managers, QM officers, operatives or developers – access the same up-to-date data pool and can assemble and configure all the data they need according to their precise requirements at any time using an easily understanding the user interface. Current data can be compared with historical information in a matter of seconds. System-specific KPIs can be derived with ease at any time. This supports the entire operations control process, enables proactive problem solutions and offers practical decision-making aids, e.g. in the event of bottle-necks or malfunctions.

Detailed analyses and reports as required

SIMINE^{CIS} PIMS not only enables all critical process parameters to be monitored at all times, but also simplifies the documentation of these services without immense training effort. The spectrum ranges from the simple adjustment of the level of detail of all documentation, through flexibility in the choice of output medium, to the problem-free connection of existing environmental reporting systems.



More performance throughout

The gathered information provides decisive information about the current availability and quality of the resources – throughout the entire process chain. This enables a prompt reaction to potential bottle-necks and is the basis for the use of intelligent, proactive service concepts. This increases availability and therefore productivity.

Security of investment

The modular structure and standardized interfaces throughout ensure the ability of SIMINE^{CIS} PIMS to migrate in two directions: on the one hand in relation to existing systems and on the other in terms of future expansions in the structure and functionality of systems – for long-term high security of investment.

Our services ensure your success

It's crucial to ensure top performance throughout the entire life cycle of your plant. We make certain that you achieve that goal with our professional services, which range from financing and conception to project planning, integration and commissioning, as well as remote diagnosis and ongoing maintenance to ensure high reliability. And by modernizing your plant at the right time, we can bring it up to a performance level in line with today's expectations.

www.siemens.com/mining

*SIMINE^{CIS} is a trademark of Siemens AG.
CIS = Completely Integrated Solutions*

The information provided in this brochure contains merely general descriptions or characteristics of performance which in case of actual use do not always apply as described or which may change as a result of further development of the products. An obligation to provide the respective characteristics shall only exist if expressly agreed in the terms of contract.

Siemens AG

Industrial Solutions and Services
Mining Technologies
Schuhstraße 60
91052 Erlangen, Germany

E-Mail: mining@siemens.com

Order No.: E10001-P11-A22-V2-7600
Printed in Germany
Dispo No.: 21662 K No.: 28400
GB C-IPMIN520M07 PA 08051.5
Subject to change without prior notice

© Siemens AG 2005. All Rights Reserved

SIMINE^{CIS} – Completely Integrated Solutions for the Mining Industry

As a comprehensive industry-specific solution for the mining industry, our SIMINE^{CIS} product family integrates all the products and services you need for sustained maximization of your plant's performance.

For each particular task, a solution has been defined that

- **horizontally** improves all production processes – from excavation to beneficiation
- **vertically** integrates the company's information flow end-to-end, helping corporate management to make better-founded decisions
- and **chronologically** enables optimized maintenance and comes with assured further development over the whole life cycle of your plant.

Due to this unique combination of horizontal, vertical and life cycle dimensions, our solutions all carry the genes of an exhaustive and sustained plant productivity in their very core.

For more productivity. More performance. More power. Completely Integrated Solutions from Siemens.