



Good reasons for Siemens VAI-CON® car

- Easy to handle – quick exchange of spare parts
- Maintenance friendly concept to minimize the costs
- Future safety trough easy-to-integrate upgrading packages
- A clear benefit – simple and fast slag cleaning



Introducing the VAI-CON car

For quick spare parts exchange and simple slag cleaning

Ready to use plug & play unit

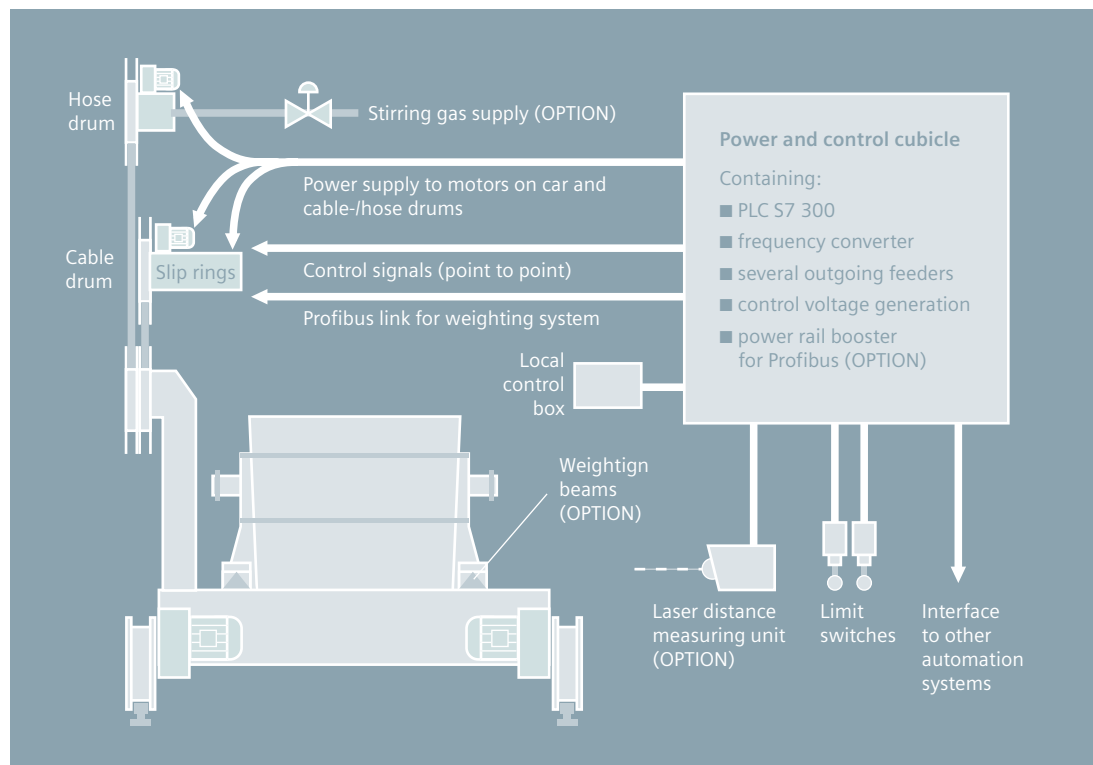
Fully integrated power supply, drive and control system. Easy to link to existing control and automation systems, covering the car's standard function as well as the optional features – automatic ladle weighing – automatic ladle stirring – automatic car positioning.

Characteristics

- Siemens VAI sturdy quality
- Modular set up
- Fast erection and start up
- Highest availability
- Best performance / price ratio

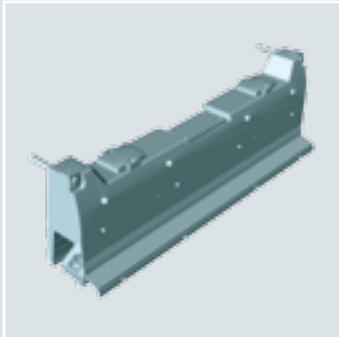
VAI-CON car features

- Ladle transport
- Ladle weighing by VAI-CON weighing beam technology including weighing data processing
- Ladle stirring by automatic gas coupling system with flow control of stirring gas
- Automatic car positioning by laser distance measurement

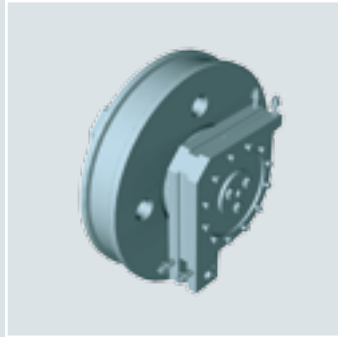


VAI-CON car concept

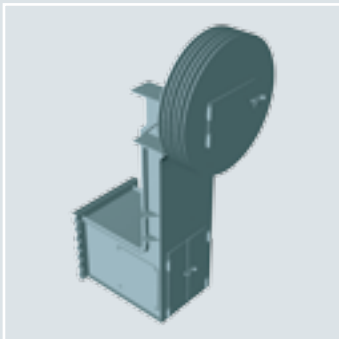
VAI-CON car components



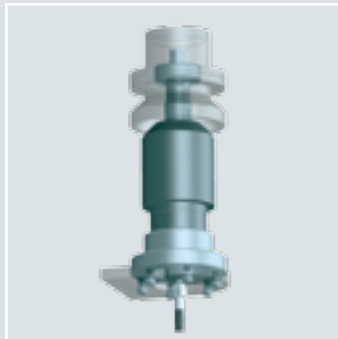
Weighing unit with weighing beam



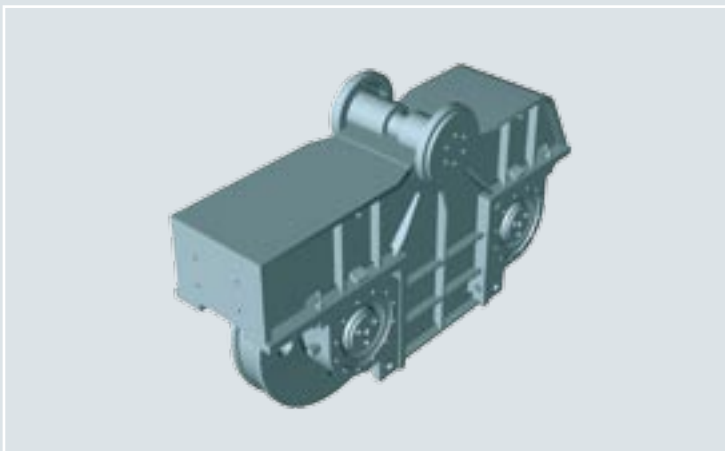
Wheelset



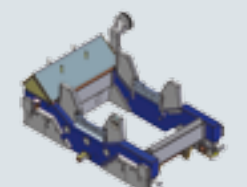
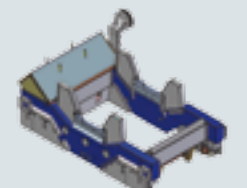
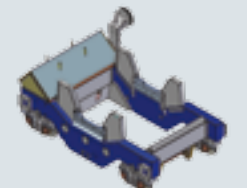
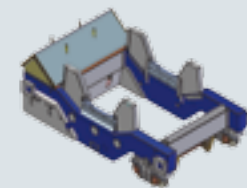
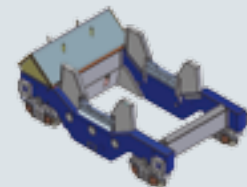
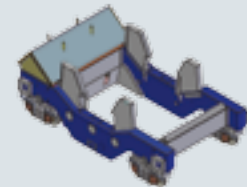
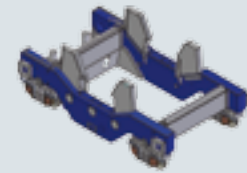
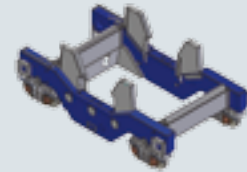
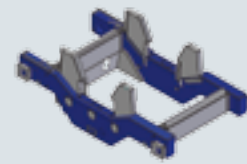
Cable arm with junction box



Automatic gas coupling system



Wheelunit



VAI-CON car construction



VAI-CON car

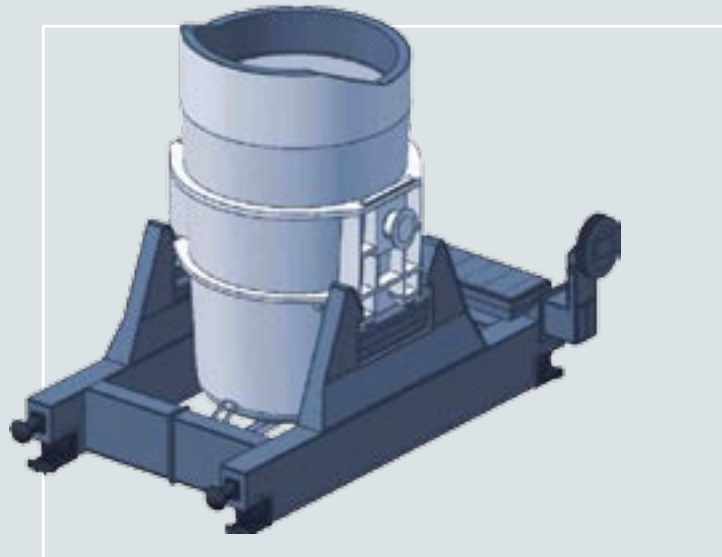
For long term operation cycles

The challenge:

Transfer cars are basically used for moving steel ladles and scrap baskets. However, modern ladle cars also have to feature a multitude of additional functions (e.g. weighing, gas steering, tilting). Furthermore, ladle cars are exposed to high loads of weight, dust and heat, which increases the demand for a sophisticated maintenance-friendly concept.

Our solution:

The long-term experience of Siemens VAI enables us to provide customized solutions for sustainable equipment with high availability. The new generation of ladle transfer cars from Siemens VAI is designed to meet the highest demands for performance. Modular set-up of the VAI-CON® car concept enables installation of VAI-CON weighing beam technology or automatic stirring gas coupling at any time. The VAI-CON car is designed for long-term operation cycles, short service stops and quick exchangeability of components in an absolute minimum of time.



Next generation ladle transfer car

**For further information,
please contact:**

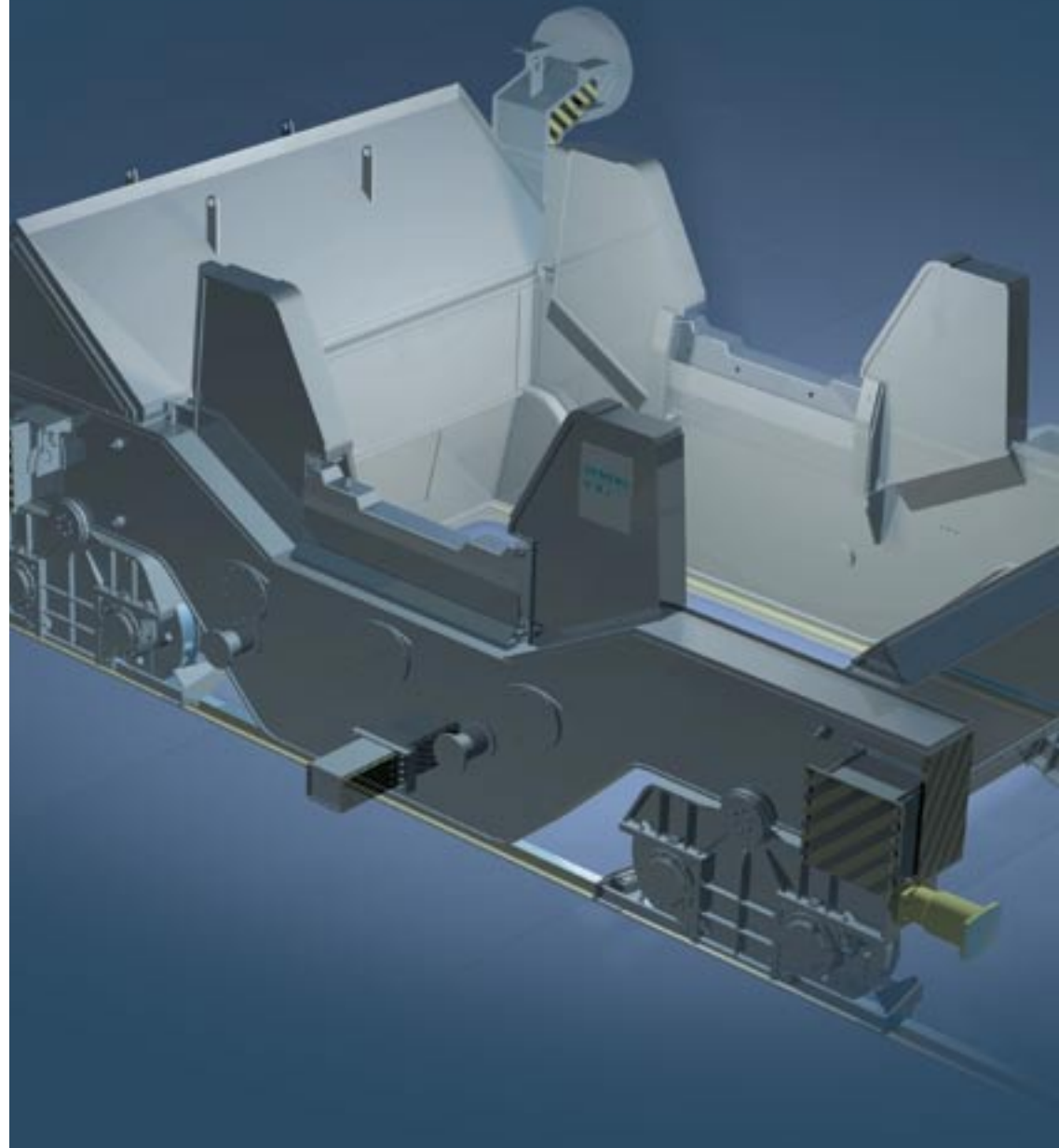
Siemens VAI
Metals Technologies GmbH & Co
P.O. Box 4, Turmstr. 44
4031 Linz, Austria
Phone: +43 (0)732 6592-0
E-mail: service.metals@siemens.com

The information provided in this brochure contains merely general descriptions or characteristics of performance which in actual case of use do not always apply as described or which may change as a result of further development of the products. An obligation to provide the respective characteristics shall only exist if expressly agreed in the terms of contract.

Order No.: E10001-M2-A8-V2-7600
Printed in Austria
Dispo No.: 21661 K-No.: 28102
SPS SVAI-07-00343 PA 05071.
Subject to change without prior notice

©Siemens AG 2007.
All rights reserved.

www.siemens-vai.com



VAI-CON car

Modular adaptability to meet your special needs

www.siemens-vai.com

SIEMENS
VAI 